



COUNTY OF MARION, SOUTH CAROLINA

Nichols Fire Station - REBID

Bid No. 2018 07

Marion County Administration

2523 E Hwy 76

Marion, South Carolina 29571

Bid Specification

November 20, 2018

MARION COUNTY, SOUTH CAROLINA

Nichols Fire Station - REBID

DUE DATE/TIME:

December 5, 2018 @ 5:00 PM (EST)

BID NUMBER:

BID NUMBER 2018 07 - REBID

POINT OF RECEIPT:

Personnel & Purchasing Department
Attn: Katherine Bell
Personnel Director
Marion County Administration Offices
2523 E Hwy 76
Marion, SC 29571

Details for Bid No. 2018 – 07 can be found on our website www.marionsc.org under “Online Bids”.

Bids will be received in the office of the Personnel Director, 2523 E. Hwy 76, Marion, S.C. 29571 until 5:00 P.M. , Wednesday, December 5, 2018 . All inquiries to this bid must be addressed to Brandon Elvis with Venture Engineering via email belvis@seccoast.net. Contact with other departments or County representatives without permission of the Personnel Director may render your proposal void.

Bids will be opened on Thursday, December 6, 2018 @ 10:00 A.M. and their contents will be made public for the information of bidders and others properly interested. Any bid received later than the specified time will not be accepted/considered.

Bids must be submitted in a sealed envelope and clearly marked on the outside with the name of the project.

BID SPECIFICATIONS

SITE DEVELOPMENT PLANS FOR NICHOLS VOLUNTEER FIRE STATION MARION COUNTY, SOUTH CAROLINA

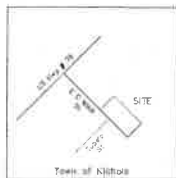
PREPARED FOR:
TOWN OF NICHOLS
514 W. MULLINS STREET
NICHOLS, SC 29581

TMS # 707-08-08

JULY 6, 2018
REVISED: OCTOBER 9, 2018

PREPARED BY:

VENTURE ENGINEERING
209 HIGHWAY 544
CONWAY, SC 29526



LOCATION MAP
N.T.S.

SHEET INDEX:

#	SHEET NAME	DESCRIPTION
1	C-1	DEMOLITION PLAN
2	C-2	SITE PLAN
3	D-1	GRADING & DRAINAGE PLAN
4	D-2	SEDIMENT & EROSION CONTROL PLAN
5	L-1	LANDSCAPE PLAN

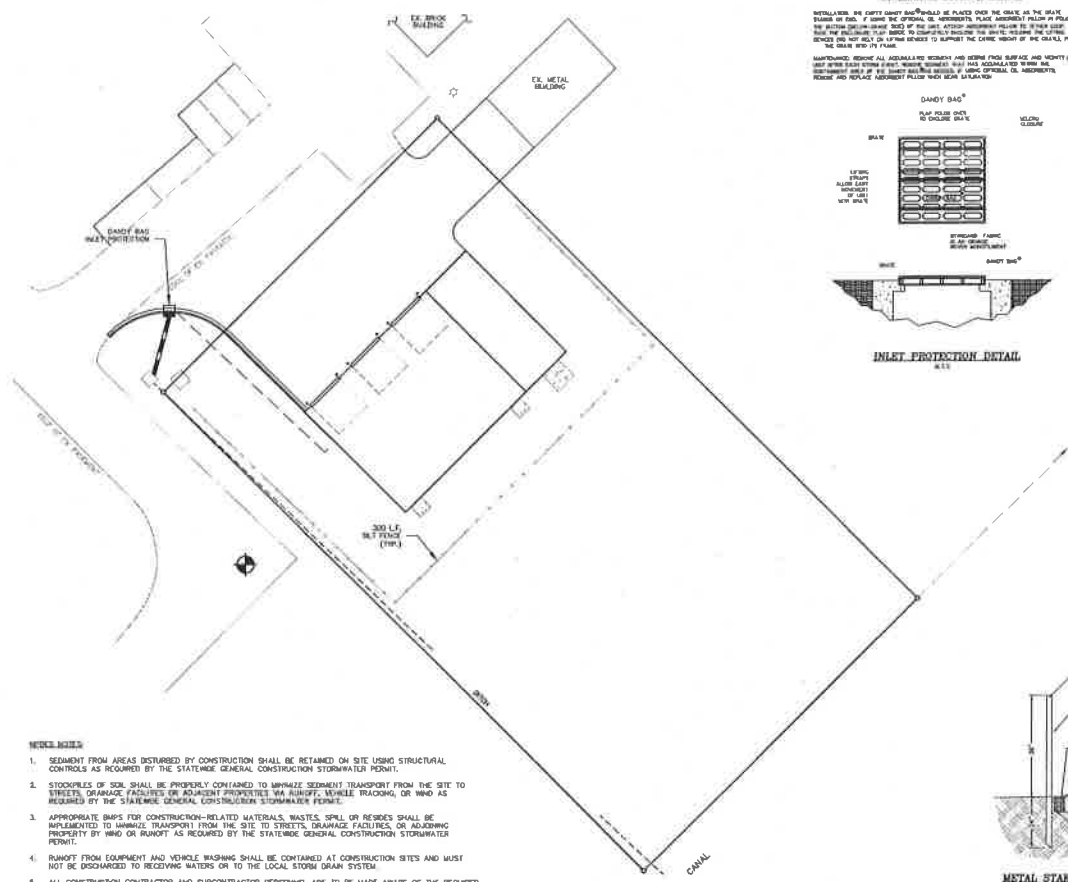
THESE DOCUMENTS AND PLANS ARE AN INSTRUMENT OF SERVICE AND THE SOLE PROPERTY OF VENTURE ENGINEERING, INC. AND ARE SUBJECT TO COPYRIGHT LAW.

CONSTRUCTION SEQUENCE

1. CLEAR ONLY THE AREAS FOR INSTALLING SILT FENCE PER EROSION CONTROL PLAN.
2. INSTALL SILT FENCE PER DETAILS.
3. CLEAR REMAINING SITE PER EROSION CONTROL PLAN.
4. DEMO AND STRIP TOPSOIL TO SUBGRADE.
5. IMPORT FILL MATERIAL AS REQUIRED & GRADE SITE TO SUBGRADE.
6. INSTALL STORM SEWER LINES FOR BRANCH PIPES AND UTILITY LINES.
7. INSTALL BASE MATERIAL AS PER SPECIFICATIONS AND PLANS.
8. COMPLETE UTILITY CONSTRUCTION.
9. INSTALL STABILIZATION MEASURES AS PER SPECIFICATIONS AND PLANS TO PROTECT GRADE.
10. REMOVE SILT FENCE WHEN DRAINAGE HAS BEEN ESTABLISHED ALONG ALL DISTURBED AREAS.

STANDARD SPECIFIC NOTES

1. IF NECESSARY, SLOPES WHICH EXCEED EIGHT (8) VERTICAL FEET SHOULD BE STABILIZED WITH SYNTHETIC OR VEGETATIVE MATS. IN ADDITION TO STABILIZING, IT MAY BE NECESSARY TO INSTALL TEMPORARY SLOPE DRAINS DURING CONSTRUCTION. TEMPORARY DRAINS WILL BE TEMPORARILY CEASED, BUT IN NO CASE MORE THAN FOURTEEN (14) DAYS AFTER WORK HAS CEASED, EXCEPT AS STATED BELOW.
 - WHERE STABILIZATION BY THE 14TH DAY IS PRECLUDED BY SNOW COVER OR FROZEN GROUND, CONDITIONS STABILIZATION MEASURES MUST BE MAINTAINED AS LONG AS PRACTICABLE.
 - WHERE CONSTRUCTION ACTIVITY ON A PORTION OF THE SITE IS TEMPORARILY CEASED, AND EARTH-RESTORING ACTIVITIES WILL BE RESUMED WITHIN 14 DAYS, TEMPORARY STABILIZATION MEASURES DO NOT HAVE TO BE MAINTAINED ON THAT PORTION OF THE SITE.
2. ALL SEDIMENT AND EROSION CONTROL DEVICES SHALL BE INSPECTED ONCE EVERY CALENDAR WEEK. IF PERIODIC INSPECTIONS OR OTHER INFORMATION INDICATES THAT A BMP HAS BEEN IMPROPERLY OR IMPROPERLY INSTALLED, THE PERMITTEE MUST ADDRESS THE NECESSARY REPLACEMENT OR MODIFICATION REQUIRED TO CORRECT THE BMP WITHIN 48 HOURS OF IDENTIFICATION.
3. PROVIDE SILT FENCE AND/OR OTHER CONTROL DEVICES AS MAY BE REQUIRED, TO CONTROL SOIL EROSION DURING UTILITY CONSTRUCTION. ALL DISTURBED AREAS SHALL BE CLEANED, GRADED, AND STABILIZED WITH GRASSING IMMEDIATELY AFTER THE UTILITY INSTALLATION. FILL COVER AND TEMPORARY SEEDING AT THE END OF EACH DAY ARE RECOMMENDED. IF WATER IS ENCOUNTERED WHILE TRENCHING, THE WATER SHOULD BE FILTERED TO REMOVE ANY SEDIMENTS BEFORE BEING PUMPED BACK INTO ANY WATERS OF THE STATE.
4. ALL EROSION CONTROL DEVICES SHALL BE PROPERLY MAINTAINED DURING ALL PHASES OF CONSTRUCTION UNTIL THE COMPLETION OF ALL CONSTRUCTION ACTIVITIES AND ALL DISTURBED AREAS HAVE BEEN STABILIZED. ADDITIONAL CONTROL DEVICES MAY BE REQUIRED DURING CONSTRUCTION IN ORDER TO CONTROL EROSION AND/OR OFF-SITE SEDIMENTATION. ALL TEMPORARY CONTROL DEVICES SHALL BE REMOVED ONCE CONSTRUCTION IS COMPLETE AND THE SITE IS STABILIZED.
5. THE CONTRACTOR MUST TAKE NECESSARY ACTION TO MINIMIZE THE TRACKING OF MUD ONTO PAVED ROADWAYS FROM CONSTRUCTION AREAS AND THE GENERATION OF DUST. THE CONTRACTOR SHALL DAILY REMOVE MUD/SOIL FROM PAVEMENT, AS MAY BE REQUIRED.
6. RESIDENTIAL SUBDIVISIONS REQUIRE EROSION CONTROL FEATURES FOR INFRASTRUCTURE AS WELL AS FOR INDIVIDUAL LOT CONSTRUCTION. INDIVIDUAL PROPERTY OWNERS SHALL FOLLOW THESE PLANS DURING CONSTRUCTION OR OBTAIN APPROVAL OF AN ALTERNATIVE PLAN IN ACCORDANCE WITH S&S REG. 73-200 ET SEQ. AND S&S10000.
7. TEMPORARY EROSION BARRIERS AND/OR DITCHES WILL BE PROVIDED AS NEEDED DURING CONSTRUCTION TO PROTECT WORK AREAS FROM UP-SLOPE RUNOFF AND/OR TO DIVERT SEDIMENT-LOADED WATER TO APPROPRIATE TRAPS OR STABLE OUTLETS.
8. ALL WATERS OF THE STATE (WOS), INCLUDING WETLANDS, ARE TO BE FLAGGED OR OTHERWISE CLEARLY MARKED IN THE FIELD. A DOUBLE ROW OF SILT FENCE IS TO BE INSTALLED IN ALL AREAS WHERE A 50-FOOT BUFFER CAN BE MAINTAINED BETWEEN THE DISTURBED AREA AND ALL WOS. A 10-FOOT BUFFER SHOULD BE MAINTAINED BETWEEN THE LAST ROW OF SILT FENCE AND ALL WOS.
9. LITTER, CONSTRUCTION DEBRIS, OILS, FUELS, AND BUILDING PRODUCTS WITH SIGNIFICANT POTENTIAL FOR IMPACT (EVEN AS STOCKPILES OF FRESHLY TREATED LUMBER) AND CONSTRUCTION OVERHAULS THAT COULD BE EXPOSED TO STORM WATER MUST BE PREVENTED FROM BECOMING A POLLUTANT SOURCE IN STORM WATER DISCHARGES.
10. A COPY OF THE SWPPP, INSPECTION RECORDS AND RAINFALL DATA MUST BE RETAINED AT THE CONSTRUCTION SITE OR A NEARBY LOCATION EASILY ACCESSIBLE DURING NORMAL BUSINESS HOURS FROM THE DATE OF COMMENCEMENT OF CONSTRUCTION ACTIVITIES TO THE DATE THAT FINAL STABILIZATION IS REACHED.
11. INITIATE STABILIZATION MEASURES ON ANY EXPOSED STEEP SLOPE (3:1 V OR GREATER) WHERE LAND-DISTURBING ACTIVITIES HAVE PERMANENTLY OR TEMPORARILY CEASED, AND WILL NOT RESUME FOR A PERIOD OF 7 CALENDAR DAYS.
12. MINIMIZE SOIL COMPACTION AND, UNLESS INEVITABLE, PREVENT TOPSOIL.
13. MINIMIZE THE DISCHARGE OF POLLUTANTS FROM EQUIPMENT AND VEHICLE WASHING, WHEEL WASH WATER, AND OTHER WASH WATERS. WASH WATERS MUST BE TREATED IN A SEDIMENT BASIN OR ALTERNATIVE CONTROL THAT PROVIDES EQUIVALENT OR BETTER TREATMENT PRIOR TO DISCHARGE.
14. MINIMIZE THE DISCHARGE OF POLLUTANTS FROM DEWATERING OF TRENCHES AND EXCAVATED AREAS. THESE DISCHARGES ARE TO BE TREATED THROUGH APPROPRIATE BMPs (SEDIMENT BASIN, FILTER BAG, ETC.).
15. THE FOLLOWING DISCHARGES FROM THE SITE ARE PROHIBITED:
 - WASTEWATER FROM WASHOUT OF CONCRETE, UNLESS MANAGED BY AN APPROPRIATE CONTROL.
 - WASTEWATER FROM WASHOUT AND CLEANOUT OF STUCCO, PAINT, FROM RELEASE OILS, CURING COMPOUNDS AND OTHER CONSTRUCTION MATERIALS.
 - OILS, OILS OR OTHER POLLUTANTS USED IN VEHICLE AND EQUIPMENT OPERATION AND MAINTENANCE.
 - OILS OR SOLVENTS USED IN VEHICLE AND EQUIPMENT WASHING.
16. AFTER CONSTRUCTION ACTIVITIES BEGIN, INSPECTIONS MUST BE CONDUCTED AT A MINIMUM OF AT LEAST ONCE EVERY CALENDAR WEEK AND MUST BE CONDUCTED UNTIL FINAL STABILIZATION IS REACHED ON ALL AREAS OF THE CONSTRUCTION SITE.
17. IF EXISTING BMPs NEED TO BE MOVED OR IF ADDITIONAL BMPs ARE NECESSARY TO COMPLY WITH THE REQUIREMENTS OF THIS PERMIT AND/OR S&S WATER QUALITY STANDARDS, IMPLEMENTATION MUST BE COMPLETED BEFORE THE NEXT STORM EVENT WITH PRACTICABLE LEAD TIME. IF THE NEXT STORM EVENT IS IMPRACTICABLE, THE SITUATION MUST BE DOCUMENTED IN THE SWPPP AND ALTERNATIVE BMPs MUST BE IMPLEMENTED AS SOON AS REASONABLY POSSIBLE.



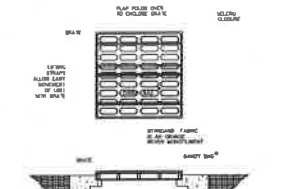
NEEDS LIST

1. SEDIMENT FROM AREAS DISTURBED BY CONSTRUCTION SHALL BE RETAINED ON SITE USING STRUCTURAL CONTROLS AS REQUIRED BY THE STATEWIDE GENERAL CONSTRUCTION STORMWATER PERMIT.
2. STOCKPILES OF SOIL SHALL BE PROPERLY CONTAINED TO MINIMIZE SEDIMENT TRANSPORT FROM THE SITE TO STREETS, DRAINAGE FACILITIES OR ADJACENT PROPERTIES VIA RUNOFF, SEWER TRUCKING, OR WIND AS REQUIRED BY THE STATEWIDE GENERAL CONSTRUCTION STORMWATER PERMIT.
3. APPROPRIATE BMPs FOR CONSTRUCTION-RELATED MATERIALS, WASTES, SPILL OR RESIDUES SHALL BE IMPLEMENTED TO MINIMIZE TRANSPORT FROM THE SITE TO STREETS, DRAINAGE FACILITIES, OR ADJACENT PROPERTY BY WIND OR RUNOFF AS REQUIRED BY THE STATEWIDE GENERAL CONSTRUCTION STORMWATER PERMIT.
4. RUNOFF FROM EQUIPMENT AND VEHICLE WASHING SHALL BE CONTAINED AT CONSTRUCTION SITES AND MUST NOT BE DISCHARGED TO RECEIVING WATERS OR TO THE LOCAL STORM DRAIN SYSTEM.
5. ALL CONSTRUCTION CONTRACTOR AND SUBCONTRACTOR PERSONNEL ARE TO BE MADE AWARE OF THE REQUIRED BEST MANAGEMENT PRACTICES AND GOOD HOUSEKEEPING MEASURES FOR THE PROJECT SITE AND ANY ASSOCIATED CONSTRUCTION STAGING AREAS.
6. AT THE END OF EACH DAY OF CONSTRUCTION ACTIVITY ALL CONSTRUCTION DEBRIS AND WASTE MATERIALS SHALL BE COLLECTED AND PROPERLY DISPOSED IN TRASH OR RECYCLE BINS.
7. CONSTRUCTION SITES SHALL BE MAINTAINED IN SUCH A CONDITION THAT A STORM DOES NOT CARRY WASTES OR POLLUTANTS OFF THE SITE. DISCHARGES OF MATERIAL OTHER THAN STORMWATER (NONSTORMWATER DISCHARGES) ARE PROHIBITED EXCEPT AS AUTHORIZED BY AN INDIVIDUAL WRITER PERMIT OR THE STATEWIDE GENERAL CONSTRUCTION STORMWATER PERMIT. POTENTIAL POLLUTANTS INCLUDE BUT ARE NOT LIMITED TO: SOLID OR LIQUID CHEMICAL SPILLS, WASTES FROM PAINTS, STAINS, SEALANTS, SOLVENTS, DETERGENTS, GLUES, LIME, FERTILIZERS, HERBICIDES, PESTICIDES AND ASBESTOS FIBERS, PAINT FLAKES OR STUCCO FRAGMENTS, FUELS, OILS, LUBRICANTS, AND HYDRAULIC FLUIDS OR BATTERY FLUIDS; CONCRETE AND RELATED SYSTEMS OR CURING RESIDUES; FUELABLE WASTES; WASTES FROM ENGINE EQUIPMENT; ETAL CLEANING OR CHEMICAL DEGRADING; WASTES FROM STREET CLEANING; AND SUPERDISPERSED INSTABLE WATER FROM LINE FLUSHING AND TESTING. DURING CONSTRUCTION, DISPOSAL OF SUCH MATERIALS SHOULD OCCUR IN A SECURED AND CONTROLLED TEMPORARY AREA ON-SITE, PHYSICALLY SEPARATED FROM POTENTIAL STORMWATER RUNOFF, WITH ULTIMATE DISPOSAL IN ACCORDANCE WITH LOCAL, STATE AND FEDERAL REQUIREMENTS.
8. DISCHARGING CONTAMINATED GROUNDWATER PRODUCED BY DEWATERING GROUNDWATER THAT HAS INFILTRATED INTO THE CONSTRUCTION SITE IS PROHIBITED. DISCHARGING OF CONTAMINATED SOILS VIA SURFACE EROSION IS ALSO PROHIBITED. DISCHARGING NON-CONTAMINATED GROUNDWATER PRODUCED BY DEWATERING ACTIVITIES REQUIRES A NATIONAL POLLUTANT DISCHARGE SYSTEM (NPDES) PERMIT FROM THE RESPECTIVE STATE REGIONAL WATER QUALITY CONTROL BOARD.

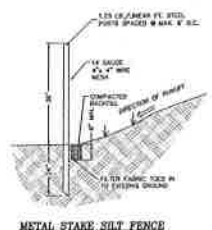
DANDY BAG®

INSTALLATION AND MAINTENANCE GUIDELINES
 INSTALLATION: IN SLOTTED DANDY BAGS SHOULD BE PLACED OVER THE GULCH OR THE GULCH FLUME OR SPA. IF USING THE ORIGINAL 24" SPACINGS, PLACE APPROXIMATELY 10' FROM THE END OF THE GULCH. THE BAGS SHOULD BE PLACED IN A LINE TO COVER THE ENTIRE LENGTH OF THE GULCH. THE BAGS SHOULD BE PLACED IN A LINE TO COVER THE ENTIRE LENGTH OF THE GULCH. THE BAGS SHOULD BE PLACED IN A LINE TO COVER THE ENTIRE LENGTH OF THE GULCH.

DANDY BAG®



INLET PROTECTION DETAIL



METAL STAKE SILT FENCE

SEDIMENT & EROSION CONTROL PLAN

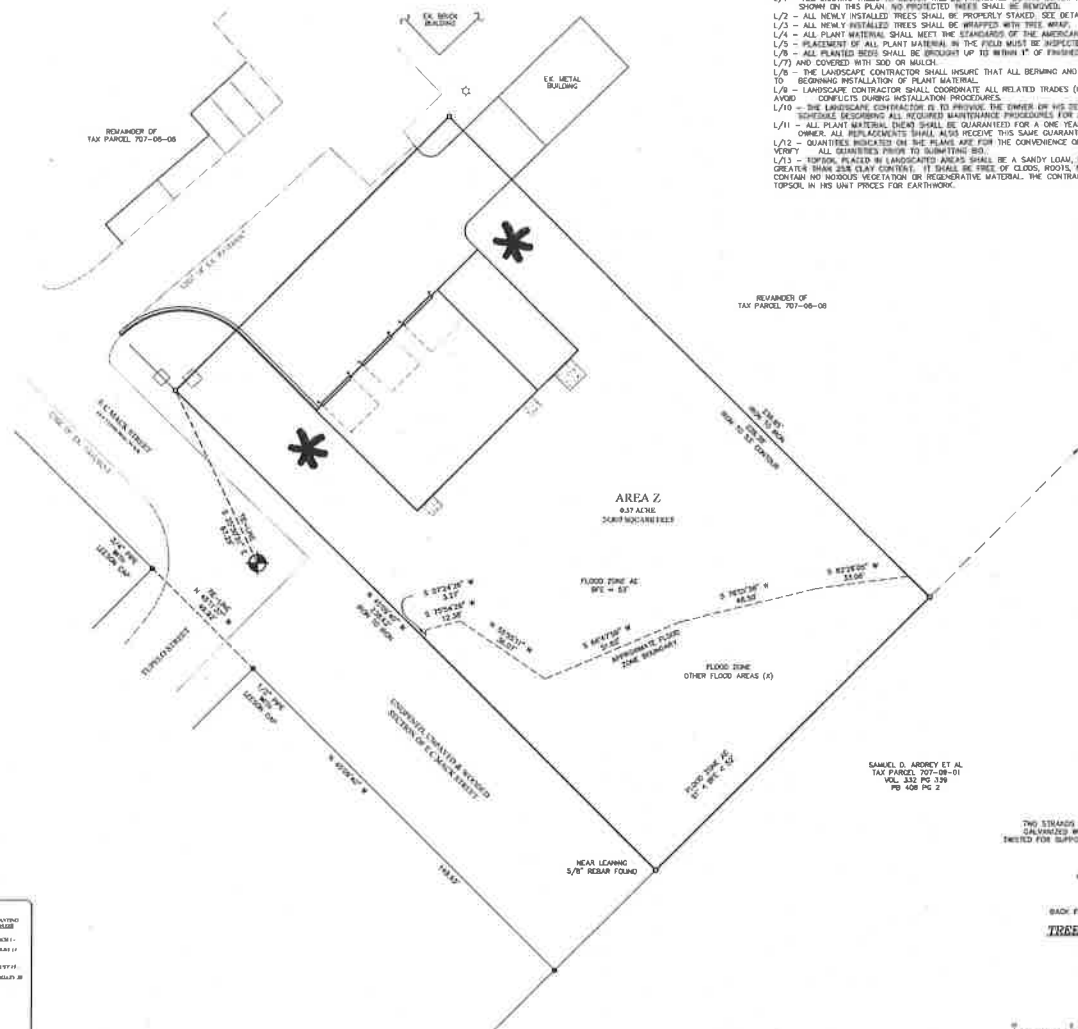


DATE: JULY 6, 2018	PROJECT: D-2
DESIGNED BY: E.R.E.	CHECKED BY: S.S.P.
DRAWN BY: M.C.	APP. BY: M.C.
NO.	DATE
BY	DESCRIPTION

VENTURE ENGINEERING, INC. / 209 HIGHWAY 544 / CONWAY, S.C. 29526 / (843) 347-5851 / CIVIL & STRUCTURAL ENGINEERING

NICHOLS VOLUNTEER FIRE STATION
 514 W. MULLINS STREET NICHOLS, SC 29501
 PREPARED FOR
 TOWN OF NICHOLS

10-9-18



LANDSCAPE NOTES

L/1 - ALL EXISTING TREES TO REMAIN WILL BE PROTECTED DURING CONSTRUCTION. TREES INDICATED TO REMAIN ARE SHOWN ON THIS PLAN. NO PROTECTED TREES SHALL BE REMOVED.

L/2 - ALL NEWLY INSTALLED TREES SHALL BE PROPERLY STAKED. SEE DETAIL THIS SHEET.

L/3 - ALL NEWLY INSTALLED TREES SHALL BE WRAPPED WITH TREE WRAP.

L/4 - ALL PLANT MATERIAL SHALL MEET THE STANDARDS OF THE AMERICAN HORTICULTURE SOCIETY.

L/5 - PLACEMENT OF ALL PLANT MATERIAL IN THE FIELD MUST BE INSPECTED AND APPROVED PRIOR TO INSTALLATION.

L/6 - ALL PLANTED SEEDS SHALL BE BROUGHT UP TO MINIMUM 1" OF FINISHED GRADE WITH APPROVED TOPSOIL (SEE NOTE L/7) AND COVERED WITH 300 OR MULCH.

L/8 - THE LANDSCAPE CONTRACTOR SHALL INSURE THAT ALL BERING AND GRADING OPERATIONS ARE COMPLETE PRIOR TO BEGINNING INSTALLATION OF PLANT MATERIAL.

L/9 - LANDSCAPE CONTRACTOR SHALL COORDINATE ALL RELATED TRADES (IRRIGATION, LANDSCAPE LIGHTING, ETC.) TO AVOID CONFLICTS DURING INSTALLATION PROCEDURES.

L/10 - THE LANDSCAPE CONTRACTOR IS TO PROVIDE THE OWNER OR HIS DESIGNATED REPRESENTATIVE A MAINTENANCE SCHEDULE DESCRIBING ALL REQUIRED MAINTENANCE PROCEDURES FOR A ONE YEAR PERIOD.

L/11 - ALL PLANT MATERIAL (TREES) SHALL BE GUARANTEED FOR A ONE YEAR PERIOD FOLLOWING ACCEPTANCE BY THE OWNER. ALL PERENNIALS SHALL ALSO RECEIVE THIS SAME GUARANTEE.

L/12 - QUANTITIES INDICATED ON THE PLANS ARE FOR THE CONVENIENCE OF THE CONTRACTOR. CONTRACTOR SHALL VERIFY ALL QUANTITIES PRIOR TO SUBMITTING BID.

L/13 - TOPSOIL PLACED IN LANDSCAPED AREAS SHALL BE A SANDY LOAM, FRANKLE AND FERTILE SUBSTRATE, WITH NO GREATER THAN 2% CLAY CONTENT. IT SHALL BE FREE OF CLODS, ROOTS, GRASS, AND OTHER MATERIAL. IT SHALL CONTAIN NO TOXIC VEGETATION OR REGENERATIVE MATERIAL. THE CONTRACTOR SHALL INCLUDE THE COST OF TOPSOIL IN HIS UNIT PRICES FOR EARTHWORK.

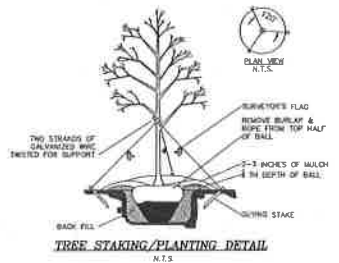
PLANT SCHEDULE

Total Trees / Shrubs Provided = 2
Proposed Canopy Trees = 2

PLANT LEGEND

Emergent Canopy Tree
Minimum of 8' Height at planting
Cabbage Palm "Subal Palmetto"

QUANTITY	COMMON NAME	SCIENTIFIC NAME	PLANTING DATE
2	EMERGENT CANOPY TREE	CYPRESS PALM	JULY 11
2	EMERGENT CANOPY TREE	CYPRESS PALM	JULY 11



LANDSCAPE PLAN

VENTURE ENGINEERING, INC. / 209 HIGHWAY 944 / CONWAY, S.C. 29528 / (843) 347-5851 / CIVIL & STRUCTURAL ENGINEERING /

DATE: JULY 6, 2018

PROJECT: 514 W. MULLINS STREET NICHOLS, SC 29601

DESIGNED BY: S.D.P.

CHECKED BY: S.D.P.

IN CHARGE: NICHOLS

SHEET 5 OF 5

DATE: JULY 6, 2018

PROJECT: 514 W. MULLINS STREET NICHOLS, SC 29601

DESIGNED BY: S.D.P.

CHECKED BY: S.D.P.

IN CHARGE: NICHOLS

NICHOLS VOLUNTEER FIRE STATION
514 W. MULLINS STREET NICHOLS, SC 29601
PREPARED FOR
TOWN OF NICHOLS

INSTRUCTIONS TO BIDDERS

1. This folder includes the following:
 - (a) Cover Sheet
 - (b) Instructions to Bidder
 - (c) Specifications
 - (d) Bid Forms
2. Each bid proposal must be submitted in a sealed envelope, so marked as to indicate its contents without being opened. Bid proposals will be examined immediately after opening and bids tabulated with said tabulation being made available to all participating. It is not the practice to award any bid until the Personnel Director and the Administrator along with any other county personnel have had ample time to review each bid proposal. The award however will be made after this has been presented to County Council in regular session at the earliest possible date. No bid proposal may be withdrawn for thirty (30) days. Mail delayed beyond the date and hour set for bid opening will not be considered/accepted.
3. The bid shall be awarded to the most responsible and responsive bidder meeting County's specifications, taking into consideration the following: superior quality, price, time of delivery, adequate service, guarantees and past performance of bidder on previous orders.

RESPONSIBLE BIDDER means a person/firm who has the capability to perform fully the contract requirements and the integrity and reliability to perform fully the contract requirement which will assure good faith performance. All items 1 through 10 inclusively must be completed by one bidder - bidder may subcontract if necessary.
- RESPONSIVE BIDDER** means a person/firm who has submitted a bid which conforms in all material respects to Invitation-To-Bid.
4. **Brand Names** The specifications contained herein may in some cases, refer to brand names. Brand names and numbers, if used, are used only to set forth and convey to prospective bidders, the general style, type, character or quality of the item/equipment or services desired.
5. **Deviation** Any deviation from the specifications must be noted in detail on the returned bid proposal form by **attaching** a sheet listing them. Absence of this specification deviation sheet will hold the bidder strictly accountable to the specifications as written here in. **Failure** to submit this document of specification deviation shall be grounds for rejection of these items.
6. **Changes** Any changes in specifications after the contract has been awarded, must be with the written consent of the Personnel Director or County Administrator; otherwise the responsibility for such changes lies with the vendor.

7. **Information** Questions concerning bid requirements should be directed to the Personnel Director by calling (843) 423-8201. All changes in specifications shall be in writing and furnished to all bidders. All verbal information obtained otherwise, will not be considered in the awarding of the bid.
8. **Inspection/Acceptance** Shall be conducted by the County Administrator and the Public Works Director.
9. **The County of Marion reserves the right to accept or reject in whole or in part, such bids as appears in its judgment, to be in the best interest of the County.**
10. **Payment Terms** Payment will be made on normal procedures as soon after successful bidder has fully complied with contract as possible
11. Bid price should include shipping, handling and all applicable sales tax.
12. **Submit with sealed bid certificate of liability insurance, workers' compensation insurance, W-9 and business license.**
13. **Awarded bidder must apply for Marion County business license before performing any service(s).**

BID PROPOSAL FORM
FOR

INVITATION-TO-BID NO. 2018 07

Ladies and Gentlemen:

The undersigned, as bidder, hereby declares that this bid is made without connection with any other persons, companies or parties making a similar bid. It is in all respects in good faith without collusion or fraud. The bidder has carefully examined the preceding documents and hereby states that he/she will furnish the materials listed on the previous pages.

Price: _____

Date: _____

Name of Bidder

Bidders Address

Bidders Telephone No.

Signature