

**EXHAUST FAN & PUMP SCHEDULE**

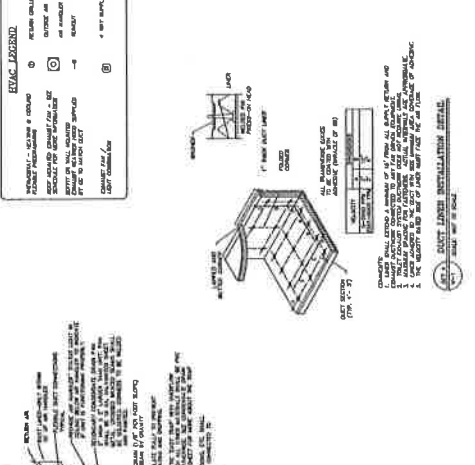
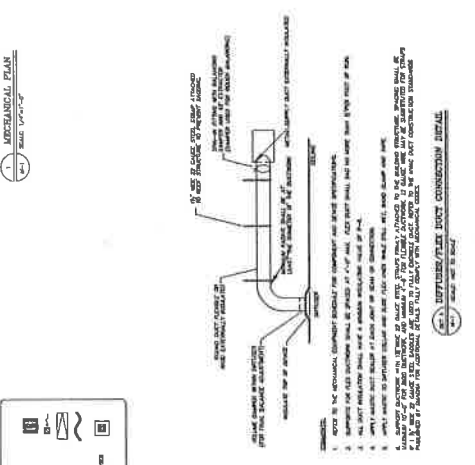
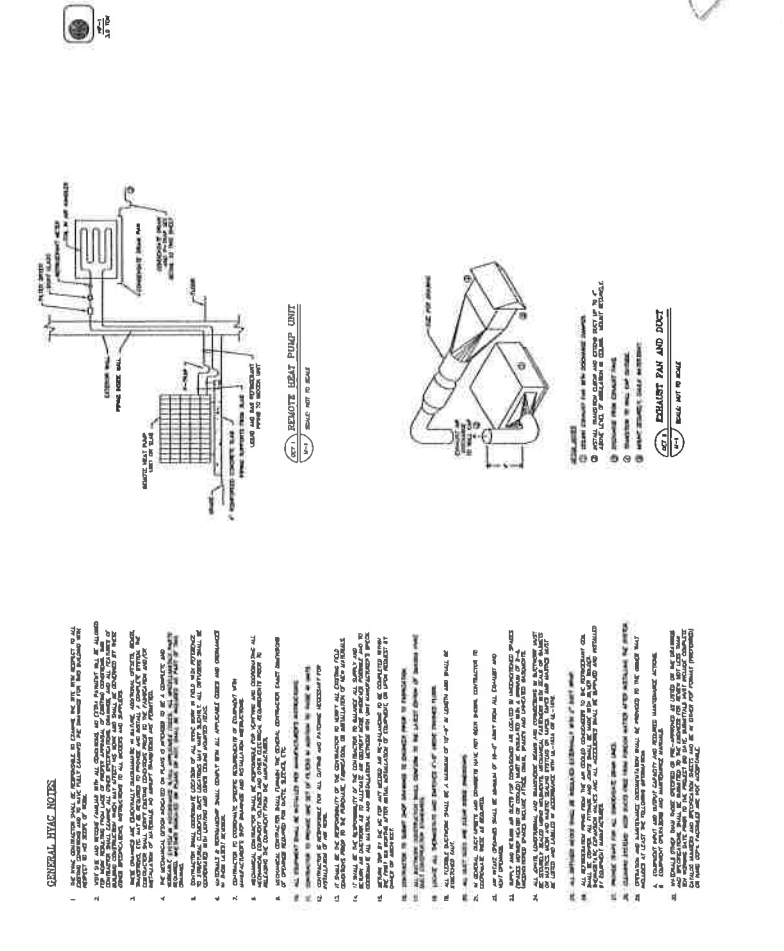
NO.	DATE	DESCRIPTION	BY	APP. NO.
1				
2				
3				
4				
5				
6				
7				
8				
9				
10				

**REMOVAL AND REPAIR SCHEDULE**

NO.	DATE	DESCRIPTION	BY	APP. NO.
1				
2				
3				
4				
5				
6				
7				
8				
9				
10				

**NOTES:**

1. EXHAUST FAN & PUMP SCHEDULE TO BE APPROVED BY THE LOCAL HEALTH DEPARTMENT.
2. EXHAUST FAN & PUMP SCHEDULE TO BE APPROVED BY THE LOCAL HEALTH DEPARTMENT.
3. EXHAUST FAN & PUMP SCHEDULE TO BE APPROVED BY THE LOCAL HEALTH DEPARTMENT.
4. EXHAUST FAN & PUMP SCHEDULE TO BE APPROVED BY THE LOCAL HEALTH DEPARTMENT.
5. EXHAUST FAN & PUMP SCHEDULE TO BE APPROVED BY THE LOCAL HEALTH DEPARTMENT.
6. EXHAUST FAN & PUMP SCHEDULE TO BE APPROVED BY THE LOCAL HEALTH DEPARTMENT.
7. EXHAUST FAN & PUMP SCHEDULE TO BE APPROVED BY THE LOCAL HEALTH DEPARTMENT.
8. EXHAUST FAN & PUMP SCHEDULE TO BE APPROVED BY THE LOCAL HEALTH DEPARTMENT.
9. EXHAUST FAN & PUMP SCHEDULE TO BE APPROVED BY THE LOCAL HEALTH DEPARTMENT.
10. EXHAUST FAN & PUMP SCHEDULE TO BE APPROVED BY THE LOCAL HEALTH DEPARTMENT.



**GENERAL HVAC NOTES:**

1. ALL NEW CONSTRUCTION SHALL BE DESIGNED TO COMPLY WITH THE REQUIREMENTS OF ALL APPLICABLE CODES AND REGULATIONS.
2. ALL EXISTING CONSTRUCTION SHALL BE MAINTAINED AND REPAIRED AS NECESSARY TO MAINTAIN COMPLIANCE WITH ALL APPLICABLE CODES AND REGULATIONS.
3. ALL MECHANICAL SYSTEMS SHALL BE DESIGNED TO OPERATE AT 100% CAPACITY UNDER ALL LOAD CONDITIONS.
4. ALL MECHANICAL SYSTEMS SHALL BE DESIGNED TO OPERATE AT 100% CAPACITY UNDER ALL LOAD CONDITIONS.
5. ALL MECHANICAL SYSTEMS SHALL BE DESIGNED TO OPERATE AT 100% CAPACITY UNDER ALL LOAD CONDITIONS.
6. ALL MECHANICAL SYSTEMS SHALL BE DESIGNED TO OPERATE AT 100% CAPACITY UNDER ALL LOAD CONDITIONS.
7. ALL MECHANICAL SYSTEMS SHALL BE DESIGNED TO OPERATE AT 100% CAPACITY UNDER ALL LOAD CONDITIONS.
8. ALL MECHANICAL SYSTEMS SHALL BE DESIGNED TO OPERATE AT 100% CAPACITY UNDER ALL LOAD CONDITIONS.
9. ALL MECHANICAL SYSTEMS SHALL BE DESIGNED TO OPERATE AT 100% CAPACITY UNDER ALL LOAD CONDITIONS.
10. ALL MECHANICAL SYSTEMS SHALL BE DESIGNED TO OPERATE AT 100% CAPACITY UNDER ALL LOAD CONDITIONS.

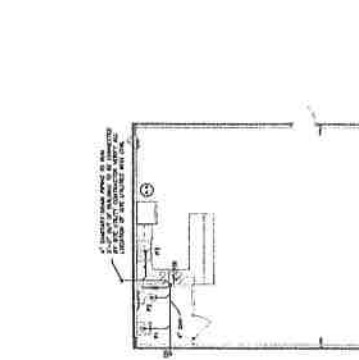


**IMPORTANT NOTE:**

THESE DOCUMENTS AND PLANS ARE AN INSTRUMENT OF SERVICE AND THE SOLE PROPERTY OF VENTURE ENGINEERING, INC. AND ARE SUBJECT TO COPYRIGHT LAW.



VENTURE ENGINEERING, INC. / 209 HIGHWAY 644 / CONWAY, S.C. 29526 / (843) 347-6661 / CIVIL ENGINEERING / LAND PLANNING



**PLUMBING PIPE SCHEDULE**

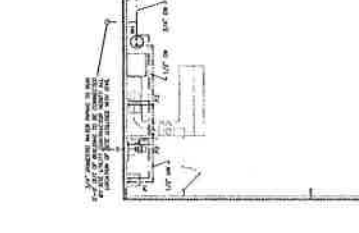
NOTE: THE SIZE OF THE ABOVE PIPE SCHEDULES ARE BASED ON THE PIPE SCHEDULES IN THE SCHEDULE

PIPE TYPE	#	PKGS.	CONNECTIONS	CONNECTIONS	CONNECTIONS	CONNECTIONS	CONNECTIONS	CONNECTIONS	CONNECTIONS	CONNECTIONS
4" SCH 40	1	1	1	1	1	1	1	1	1	1
3" SCH 40	1	1	1	1	1	1	1	1	1	1
2" SCH 40	1	1	1	1	1	1	1	1	1	1
1 1/2" SCH 40	1	1	1	1	1	1	1	1	1	1
1" SCH 40	1	1	1	1	1	1	1	1	1	1

**MINIMUM PIPING INSULATION SCHEDULE**

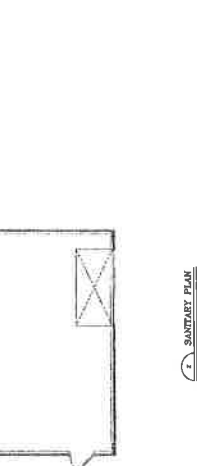
NOTE: THE SIZE OF THE ABOVE PIPE SCHEDULES ARE BASED ON THE PIPE SCHEDULES IN THE SCHEDULE

PIPE TYPE	#	PKGS.	CONNECTIONS	CONNECTIONS	CONNECTIONS	CONNECTIONS	CONNECTIONS	CONNECTIONS	CONNECTIONS	CONNECTIONS
4" SCH 40	1	1	1	1	1	1	1	1	1	1
3" SCH 40	1	1	1	1	1	1	1	1	1	1
2" SCH 40	1	1	1	1	1	1	1	1	1	1
1 1/2" SCH 40	1	1	1	1	1	1	1	1	1	1
1" SCH 40	1	1	1	1	1	1	1	1	1	1



**GENERAL PLUMBING NOTES:**

- ALL PLUMBING SHALL BE INSTALLED IN ACCORDANCE WITH THE LATEST EDITIONS OF THE NATIONAL PLUMBING CODE AND ALL APPLICABLE LOCAL ORDINANCES.
- ALL PIPING SHALL BE INSTALLED IN ACCORDANCE WITH THE LATEST EDITIONS OF THE NATIONAL PLUMBING CODE AND ALL APPLICABLE LOCAL ORDINANCES.
- ALL PIPING SHALL BE INSTALLED IN ACCORDANCE WITH THE LATEST EDITIONS OF THE NATIONAL PLUMBING CODE AND ALL APPLICABLE LOCAL ORDINANCES.
- ALL PIPING SHALL BE INSTALLED IN ACCORDANCE WITH THE LATEST EDITIONS OF THE NATIONAL PLUMBING CODE AND ALL APPLICABLE LOCAL ORDINANCES.
- ALL PIPING SHALL BE INSTALLED IN ACCORDANCE WITH THE LATEST EDITIONS OF THE NATIONAL PLUMBING CODE AND ALL APPLICABLE LOCAL ORDINANCES.



**PLUMBING PLAN NOTES:**

- ALL PLUMBING SHALL BE INSTALLED IN ACCORDANCE WITH THE LATEST EDITIONS OF THE NATIONAL PLUMBING CODE AND ALL APPLICABLE LOCAL ORDINANCES.
- ALL PIPING SHALL BE INSTALLED IN ACCORDANCE WITH THE LATEST EDITIONS OF THE NATIONAL PLUMBING CODE AND ALL APPLICABLE LOCAL ORDINANCES.
- ALL PIPING SHALL BE INSTALLED IN ACCORDANCE WITH THE LATEST EDITIONS OF THE NATIONAL PLUMBING CODE AND ALL APPLICABLE LOCAL ORDINANCES.
- ALL PIPING SHALL BE INSTALLED IN ACCORDANCE WITH THE LATEST EDITIONS OF THE NATIONAL PLUMBING CODE AND ALL APPLICABLE LOCAL ORDINANCES.
- ALL PIPING SHALL BE INSTALLED IN ACCORDANCE WITH THE LATEST EDITIONS OF THE NATIONAL PLUMBING CODE AND ALL APPLICABLE LOCAL ORDINANCES.